

# Gunung Palung Orangutan Conservation Program



March 2016

Issue: 39

## Code RED

An e-newsletter from your friends in West Kalimantan

Dear Friends and Supporters,

Welcome to this month's issue of *Code Red*. In the first article this month we showcase our radio program, which is currently in its 17th year! Program Director, Cassie Freund, discusses our efforts to inform people about conservation issues through this campaign medium, and our new project to evaluate its conservation impact. In the second article, GP Researcher, Robert Rodriguez Suro, explains his National Geographic Young Explorer's project on the lives of wild male orangutans. His research is the first of its kind done in Gunung Palung National Park, and will make a big contribution to our knowledge of male orangutan home range sizes. Knowing how big of an area orangutans actually need, and where they go when they leave our study site, is critical information for our conservation efforts.

In some very exciting news, on April 22nd on NatGeo Wild, GP orangutans will be featured in a new episode of the station's show *Mission Critical*. This episode, filmed by my husband, Tim Laman, and his team, will highlight the wild orangutans that we study and the conservation threats facing this unique species of great ape.

Thanks to you all for your continued support of our work!

Sincerely,

### In This Issue:

Bincang Hijau with  
GPOCP

-

The Lives of Orangutans

-

Orangutan on the Edge

-

GPOCP Artisans Sign  
Nature Conservation  
Agreement

**Orangutan on the  
Edge**

Mark your calendars for  
April 22nd! The second  
episode of NatGeo Wild's new

Cheryl Knott

Cheryl Knott, Executive Director

[Gunung Palung Orangutan Conservation Program \(GPOCP\)](#)

## Bincang Hijau with GPOCP

By Cassie Freund, GPOCP Program Director

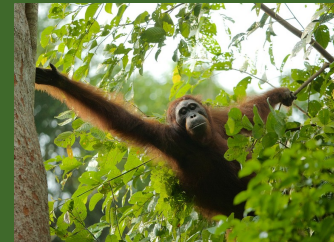
Disseminating information about orangutans, the rainforest, and other environmental issues through radio broadcasts has been in GPOCP's repertoire of conservation activities for almost 17 years. During that time, we have reached an estimated 400,000 people per month, broadcasting thousands of talk shows and radio commercials promoting the conservation of the Gunung Palung National Park landscape across three different stations. When we first began this program, radio was the main medium through which people in Indonesia received their news. There were no smart phones, no internet access, and only the wealthiest few owned television sets. Radio was the most efficient way of reaching hundreds of thousands of people at once. Today, with the introduction of modern technologies to even the most remote communities, things have changed a bit. GPOCP has adapted as well - our social media program is growing rapidly and we routinely publish news stories in online newspapers. However, despite these new technologies, radio still remains popular in Indonesia, and thus we find this to be an effective conservation campaign method. To further increase our impact, beginning last month, we initiated several new efforts to improve and evaluate our radio program.



GPOCP staff, Desi Kurniawati (back) and Mariamah Achmad (front), along with Radio Kabupaten Ketapang employee, Hapyah, discuss the Bornean Orangutan Caring Scholarship in a February radio broadcast.

The first of these was to institute a monthly theme for the radio show.

show, *Mission Critical*, titled "[Orangutans on the Edge](#)," will premiere next month. This show, filmed by Tim Laman and team, will feature Gunung Palung's wild orangutan population and highlight some of the threats that they, and all orangutans, face. We hope that you will tune in to learn more about the plight of orangutans. Check your local listings for programming information.



## GPOCP Artisans Sign Nature Conservation Agreement

On March 17th, over 40 of our Non-Timber Forest Product artisans attended a formal ceremony to mark their signing of GPOCP's first-ever community led Nature Conservation Agreement, known in Indonesia as *Kesepakatan Konservasi Alam*. This event was witnessed by officials from the Gunung Palung National Park Bureau, and the official document was signed by the head of the National Park. This agreement signifies the community's commitment to protecting the Park and its biodiversity, and will serve as a model for future conservation work in the



Each month we produce eight hours of radio programming for our show Bincang Hijau (which translates roughly to "Green Discussion"), and so focusing on a single theme means that we can dive deep into the topic. In March, our theme was oil palm plantations, including the environmental and social impacts of agricultural expansion. In April, we will focus on mining. In addition to normal informational broadcasts, we also have at least one talk show with a government official or community leader per month. For example, this month we invited an official from the Ketapang Department of Agriculture to answer listener questions about oil palm expansion in the region. We have also added in twice monthly call-in shows and given people the opportunity to "text-in" (using SMS messages) to take feedback from our audience - making radio a more interactive communication medium. Finally, we are now working with International Animal Rescue to help them develop their radio program, and they run two of our eight shows per month, bringing a fresh perspective on orangutan conservation to GPOCP's broadcasts.



*The ultimate goal of GPOCP's radio program is to raise awareness and inspire public discussion about conservation issues, ensuring the continued existence of orangutans and their rainforest habitat. Photo © Tim Laman.*

Finally, to evaluate the impact of this program, including how many people listen to our radio programs on a regular basis, GPOCP has created a web-based survey that we are circulating in local social and news media to gather information from people in Ketapang Regency about their radio-listening habits. This survey includes questions about listener demography, their geographic location (so that we know the radio station's range), what shows they listen to on the radio, and what specific topics they are interested in hearing on Bincang Hijau. We are hoping to gather input from people who listen to our show as well as those who don't, so we can better understand the demography of our listeners. The results of this survey will help us estimate the size of our audience, understand the conservation impact of our work, and

landscapes. We are grateful to the artisans for their continued participation in GPOCP's Sustainable Livelihoods program and their dedication to conservation.



Donate



Join Our Mailing List



Choose GPOCP as your Amazon Smile recipient and 0.05% of your sales will go directly to us.

Forward to a Friend

*"Like the resources it seeks to protect,*

guide future programming decisions. We will also share the data collected with the Ketapang Regency radio station, who have been very supportive of GPOCP's work over the past 17 years.

GPOCP's radio program can be heard (in Bahasa Indonesia) via our Sound Cloud account at: <https://soundcloud.com/yayasan-palung>.

## The Lives of Orangutans

By Robert Rodriguez Suro

It's 4:00 AM. Somewhere in the middle of the Bornean rainforest, a pair of hammocks hang among the trees and the leaf-littered ground. Within one of them, a watch alarm is going off, and I open my eyes to silence it. "Time to get up already?" After taking a couple moments to regain my bearings after a seemingly short night of sleep, I peek through the mosquito netting of my hammock. Rays of moonlight shine through the canopy, and the grounds of our campsite glow with an eerie spectral light. Petrichor - the smell of the earth after a light rain - fills the cool night air. As I zip open my hammock, I feel a soft breeze upon my face, and I roll out to begin my day.



*Hammocks set up in the rainforest, although simple, are a comfortable camp for Robert and his field assistants. Photo © Robert Rodriguez Suro*

It's our fourth night in a row sleeping out in the rainforest, and my assistant Evan and I find ourselves in an area 1.5km outside the Cabang Panti trail system. We are totally alone, our existence confirmed only by mutual acknowledgement. Here, the surroundings are unfamiliar; there are no trails, no flagging, and no tags to mark the way. The only thing known to us at that moment is our purpose, which is to continue following a mysterious male orangutan we've encountered traveling outside the borders of the research site. His name is Jabba, and we're hot on his tail to gather data for my National Geographic Young Explorer's project, titled *The Lives of Orangutans: Mapping Male Orangutans' Daily Lives and Ranging Patterns through the Use of Longer Term Follows*. As the title suggests, this work involves mapping the home ranges of male orangutans by following them for longer-than-standard periods, tracking their daily movements with GPS, and photographing and video-recording their movements and behaviors.

*wildlife conservation  
must be dynamic,  
changing as  
conditions change,  
seeking always to  
become more  
effective."*

*-Rachel Carlson-*





© ROBERT RODRIGUEZ SURO

*Understanding male orangutans, especially their home range size and unique behaviors, is important for their conservation. Photo © Robert Rodriguez Suro*

Orangutans, particularly male orangutans, have huge home ranges. So huge in fact, that researchers have had a very tough time definitively estimating their true size. Traditional research methods, which involve operating out of a base station located in the center of the research site, hiking out to the orangutan's nest location at 3:30 AM, following them for a full day until they make their night nest in the evening, and returning to camp afterwards to repeat the process the day after, preclude following orangutans when they nest at great distances from the base camp. This, paired with the reality that research sites are often, if not always, significantly smaller than what is believed to be the maximum home ranges of male orangutans, means that tracking male orangutans to the fringes of their home ranges soon becomes impossible using traditional methods. This is where my research project comes in. By staying with the orangutan for ten days in a row, we're able to follow them in new areas, longer and farther than ever before. This accomplishes three goals:

1. We can extend the known home range of male orangutans by following them in areas that haven't been sampled before, thus creating a more complete model of their home range.
2. Some of the areas outside the Cabang Panti research areas have been impacted by logging in the past. By comparing ranging habits, and habitat utilization, in these areas with those within the trail system, we'll be able to identify differences and gain some insight into the impact of logging on orangutans in Gunung Palung National Park.
3. By spending more time in the field, we'll have more opportunities to observe rare behaviors and social interactions, and document them on film.



*Wild male orangutan, Jabba, traveling outside of the Cabang Panti Research Station. Photo © Robert Rodriguez Suro*

By equipping ourselves with the right gear, food, and supplies, obtaining ranging data in areas outside the boundaries of Cabang Panti Research Station is no longer a barrier. When the orangutan leaves the trail system, we simply stay the night in the forest. There is no need to return to camp if we have everything we need to survive out there. By carrying our food, water, and shelter, we've essentially turned our backpacks into convertible, mobile base camps. For food, we carry Indonesia's finest assortment of trail-ready food, including canned corned beef, processed cheese, and crackers. Not the sort of menu you expect to find in a five-star restaurant (or even a two-star restaurant for that matter) but it gets the job done. At the end of the day when we finish following and begin filling our bellies with corned beef for dinner, we're always happy. For water...well, it's the rainforest, how hard could it be to find water? We collect water from anywhere we can: rivers, swampy puddles, creeks, and even directly from the rain. Most of the river water is safe for direct consumption, but we treat water from questionable sources with filters when we need to. For shelter, we use hammocks rigged up with a tarp. We've spent many nights in the jungle under heavy rain, but it's a pleasant experience to hear the sounds of the rain crashing on the leaf-litter and splashing in the swamp while staying dry in our hammocks under a well-rigged tarp. Day in and day out we continue our orangutan follows. I'm in charge of visually tracking the orangutan and documenting behavior on photo and film, and Evan takes the behavioral data.

With this system in place, we're capable of following orangutans for ten days in a row, and that's what we shoot for. Staying in the forest for that long is not always very pleasant though. There are definitely a lot of hardships that we deal with daily. In the rainforest, humidity and wetness are the natural order of things. But because we don't have the luxury of returning to camp to get dry clothes, it's very important to combat the water and stay as dry as possible, not just for comfort but for our health as well. Hiking around with wet clothing and socks in the rainforest is a great recipe for promoting chafing, fungal infections, and swamp foot. In the end, nature will always win out over our best efforts to remain dry, and we often find ourselves miserably soaked. We deal with it as best as we can, and being able to dry out a bit overnight, while we sleep, is usually enough to stave off any serious issues. You can also imagine that after a few days in the forest, our clothing can get dirty and...odorous, to say the least. But that's expected, especially when we're sweating constantly from carrying so much gear.

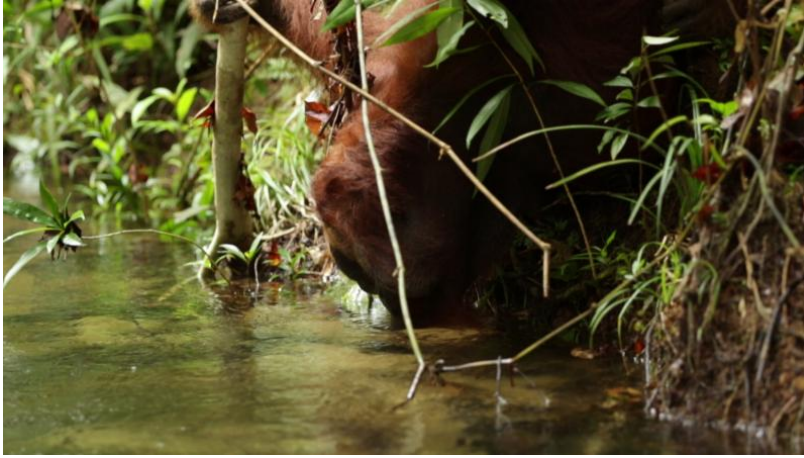


*Robert filters water for drinking. Photo © Robert Rodriguez Suro*

So far this year, it's been an interesting experience, and some things haven't turned out exactly as I'd expected. When I was a research volunteer here in 2013-2014, I observed that the male orangutans would travel long distances every day, and traveling beyond the borders of the transect was a regular occurrence for them. This year, that hasn't been the case. In fact, not once in the last seven months has a male we've found within the transect system gone more than 300 meters beyond the borders of the research site. Instead, they've been eating a lot of leaves and bark, typical fallback foods that they consume more frequently when fruit availability is lower, and this is having a significant effect on their daily activity budgets. They also don't seem to be socializing very much. Another surprising observation is that males are often making their night nests between 3:00 and 4:30 PM, much earlier than I'd grown accustomed to in the previous year. While these circumstances certainly make answering my main research question much harder, it's clear that something interesting is going on, and it'll be very informative to compare my data set from this year of research to other periods of time.

One thing that I can say for sure is that I've witnessed and documented plenty of cultural behaviors that I'd never seen before. This is especially true with one orangutan in particular: Codet. Ever since the first time I met him in 2013, he's been my favorite orangutan. This year, I've followed him extensively. Follows with Codet somehow seem a lot more intimate than with those of other orangutans; he's visible almost all of the time, and he allows me to get up really close to witness some incredible things. For one thing, he does virtually all of his traveling on the ground, an oddity for a mammal considered to be arboreal. I've also never seen an orangutan eat so many termites from the ground. Watching him use his teeth to work through a fallen branch on the ground that's been infested with termites is pretty impressive. One of the most surprising things I saw him do this past month was drink water straight out of the river and then do a strange cultural behavior I'd never witnessed before. With his mouth full of water, he would proceed to put leaves in his mouth and slowly let the water drip out, while apparently sucking on the leaves. Could this be the orangutan equivalent of mouthwash? Could orangutans actually have oral hygiene behavior? It was very interesting to witness. On the downside, I had to jump into the water with my camera and monopod and wade to the middle of the river in order to have a clear shot to film him. But, I'm glad I did because now we have proof and documentation of what may be a new orangutan cultural behavior at Gunung Palung. It sure makes lugging my heavy camera equipment around the forest worth it.





*A snapshot of Robert's video showing Codet as he drinks water directly from the river. Photo © Robert Rodriguez Suro*

I still have a few months left at Cabang Panti, and I'm sure many surprises are still in store for me. It's impossible to predict what an orangutan will do - or where he will go - on any given day. It's a job that takes a lot of patience. There have been instances where I've spent weeks searching for orangutans in vain, and begun to lose hope. There have been follows where an orangutan has done nothing but eat at the same tree for the entire day. It's easy to lose your mind during follows like these. But every once in a while, I witness that one behavior that I've never seen before, or find an orangutan somewhere I've never followed before, and I find myself hooked again. Orangutans are amazing creatures, and I feel incredibly privileged to be able to spend so much time with them in the wild. I feel that I've grown close to them, and seen into their daily lives. A big goal of mine is that through my research and photography, others can get to know these orangutans as well as I do throughout this year, so we can all understand them, appreciate them, and ultimately protect them from going extinct.

*You can follow Robert and his National Geographic Young Explorer's Project on his Instagram @rrsuro (Instagram.com/rrsuro), Facebook page (fb.com/rrsuro.photo), and Twitter @rrsuro (twitter.com/rrsuro)*

Gunung Palung Orangutan Conservation Program (GPOCP)

<http://saveGPorangutans.org>

savegorangutans@gmail.com



Orangutan Photographs © Tim Laman  
All other photographs © GPOCP staff